

# AUCKLAND CENTRAL COMMUNITY SHED

Newsletter April 2024



From the Chair...

April greetings to you all. We continue to be busy with multiple community projects, new equipment, new members and new ideas. The new helical head Planner/Thicknesser has made a significant difference to noise levels and we have added sound absorbing material to the drop saw cabinet. We continue to improve our working environment.

I would request that members be more conscientious about cleaning up and returning tools and equipment back after they have finished. Most mornings when I arrive there are drills left in chucks, tools on benches, equipment not clean and materials left out. This is added work for the DM on duty finding tools missing from their assigned storage places.

Please have consideration for other users.

## Woodworking Happenings

### Angle Grinder Disks

We are experiencing a bit of misuse of some equipment by a few members.

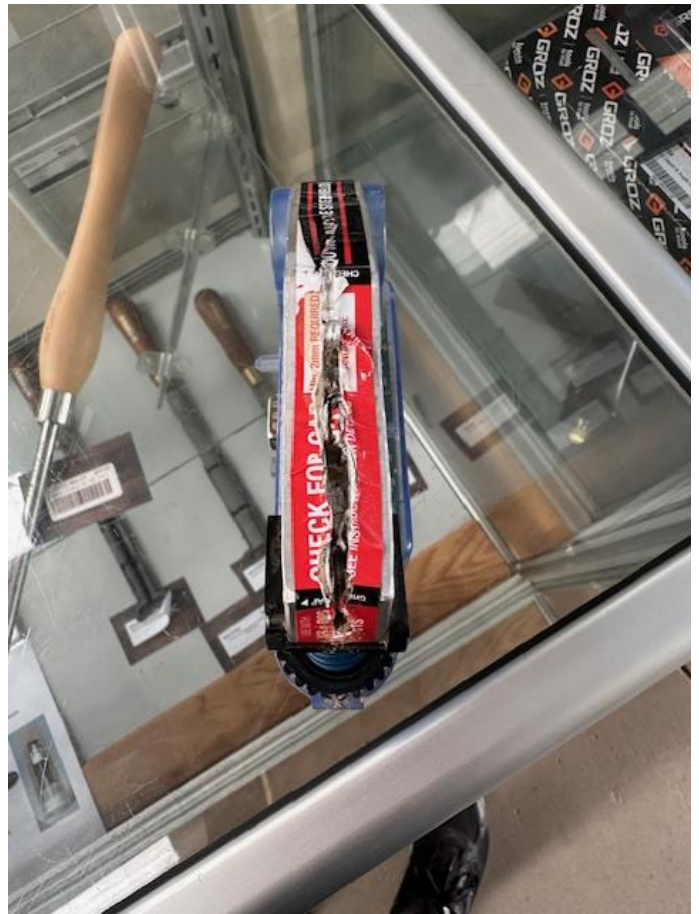
Below are 3 recent examples of misuse of angle grinders and sanding disks. The grinders have been forced until the sanding disks and the plastic backing disk have been burnt off and melted. The flapper disk at top has been forced until the surface has been glazed smooth. The two lower disks started at 115mm diameter and are now 60mm and 50mm respectively. The backing disks cost us each time to replace and the forced use is hard on the equipment. Please use them as sanders when using sanding disks, not grinders and watch disk condition, replacing when necessary.



## SawStop incident

We have had another SawStop triggering but a rather unusual one. No injury was avoided as no finger was near the blade. It appears to have gone off when it hit a brass screw buried in the timber. The timber was scanned previously but brass does not register on the detector which relies on magnetism to work.

We are investigating further to see why this unusual situation has occurred but just to show you how the system works so well here are photos of the blade buried in the SawStop cartridge. Fortunately the blade was undamaged and was able to be carefully extracted from the block. We don't see much brass hardware, especially buried in timber so we're not expecting this to happen regularly but as we use a lot of recycled timber it is a reminder to please use the scanners and do a visual check as well.



**For those who don't want Alexa listening in on your conversations, they're making a male version.....it doesn't listen to anything.**

## New Hammer Planner/Thicknesser

Before using the new Planer/Thicknesser for the first time you must get permission from the Duty Manager who will run your through it's operation.



Setting the guides for planning



Now we have an emergency stop button



Setup for Thickening



Spherical cutters instead of blades. 50% quieter

## The Metal Scanner



The metal scanner hangs between the SawStop table saw and Hammer Planner Thicknesser. There is another one by the other large table saw opposite the power board.

They must be used on any reclaimed timber or timber you are not sure of.

As mentioned above, it will only detect metal that is attracted to magnets so brass screws, etc will not be detected please be careful.

## Health and Safety

It is each and everyone's responsibility to ensure you and your fellow members are safe and never in danger. The Shed can only do so much to ensure hazards are not present but at the end of day it is you who has to take responsibility for your safety.

**Below is the response (part) from a letter from the Feb / Mar 2024 (Issue 113) edition of The Shed Magazine commenting on the operation of table saws and the various safety switches you can devise (if not already fitted) article in a previous edition (*The Shed* December/January 2024 Issue 112, page 75)**

*I don't like mandatory anything; I was taught to take responsibility for your actions (and mistakes). I've done stupid things, hurt myself, and learned from it.*

*These days, everyone has rights but not enough people take responsibility. Health and safety is about finding someone else – other than the idiot operating the machine – responsible for 'allowing' the accident to happen.*

*You can have all the health and safety systems in the world and extremely well-designed equipment, but if it's used without care, then someone will get hurt. If the operator ignores good working practices, it's their fault.*

*True accidents are rare; most 'accidents' are the result of a series of bad choices, and, if enough occur, people can get seriously hurt or even killed. While [that is] tragic, the solution is not more regulation; it's teaching people to take 100 per cent responsibility for themselves.*

**Andrew Broxholme**

## While on Health and Safety

It is a health and safety requirement that we restrict access to the working areas of woodwork, engineering and the welding bay.

For woodworking we need to ensure the bar and sign, in the picture below, are in place on both of the sliding doors entrances.



**Paddy is in court, and after an 8 hour trial he pleads guilty.**

**Judge says, "Why didn't you plead guilty at first and save the court all this time?"**

**Paddy says, "I thought I was innocent until I heard all the evidence"**

**An Irishman walks into a bar in Toronto and orders a drink.**

**The bartender, noticing his accent, asks him "What brings you to Canada?"**

**The Irishman says "Well, I was in a pub in Dublin and the coaster under my glass said 'Drink Canada Dry', so I thought I'd give it a shot"**

## Electronics Happenings

### Just a reminder

We all need to encourage members to use this space and to watch the various machine operational YouTube videos from the Melbourne Shed.

A link has been setup on the Electronics PC to:

<https://melbournemensshed.org/workshop-safety-videos/>

## Engineering Happenings

There has been damaged done to some of the bench grinding wheels. Scoring on one of the wheels indicates whatever was being ground was left on that part of the wheel for quite a time. Now we have an uneven surface.

If you don't know how to use a bench grinder **DO NOT USE IT**.

Charles Martens and Neal McCarthy will be more than happy to teach you.

## New, Proposed and For Sale (or free) Equipment at the Shed

1. New plasma cutter to replace stolen one has been given the go ahead to purchase.
2. Will be renewing the gas pipes on the oxy acetylene equipment and installing a gas shut off system to prevent gas blowback.
3. Just a reminder that the table in the lunchroom has "stuff" that you may like for free.
4. Also, around the corner to the left as you enter Engineering there is donated gear that The Shed has no use for. Make an offer, you maybe surprised at the price. See Brent Russell or Garry Bryant.

## The Auckland Central Community Shed AGM

This years AGM will be held upstairs in The Hub at 1pm 22<sup>nd</sup> June 2024

Please consider standing for a Committee position. **Remember it is your Shed.**

Also. we hope to have a vote on the new rules (Constitution) that adhere to the revise 1908 Incorporated Societies Act now called Incorporated Societies Act 2022.

The revised rules will be emailed to you prior to the AGM.

See here the major differences:

<https://is-register.companiesoffice.govt.nz/law-changes-for-societies/key-changes/>

## Monthly BBQs

Monthly lunchtime BBQ's are popular, so please come along. The BBQs are on the last Wednesday of the month round 12pm. Next one 26<sup>th</sup> April 2024 put in your diary now.



Cheers, enjoy The Shed and your fellow members.

The ACC Shed Committee